



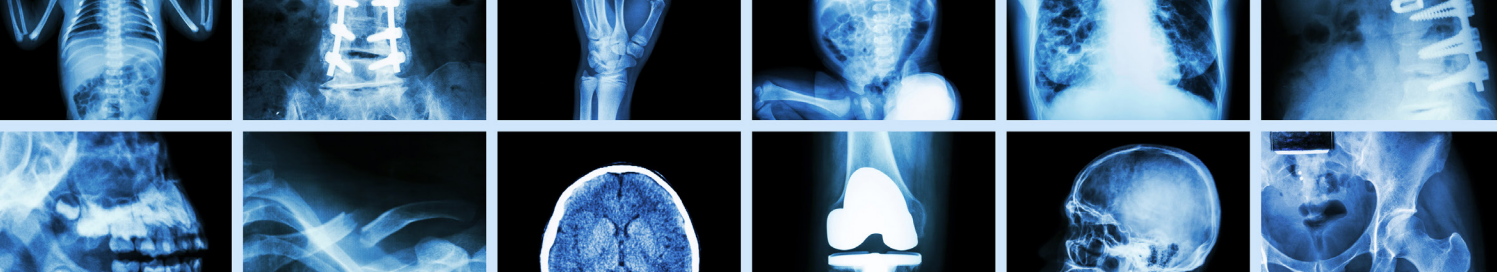
LIGHTBOX
RADIOLOGY EDUCATION

QUICK COURSE GUIDE

ONLINE 2020

WWW.LIGHTBOXRADIOLOGY.COM





X-RAY | Chest + Emergency Interpretation Essentials, Chest Interpretation Essentials, Emergency Interpretation Essentials, Acute Interpretation in Physiotherapy Essentials Online

Despite the technological advancements in medical imaging, the Chest X-Ray remains the most frequently requested radiological investigation, and one of the most difficult to interpret correctly.

Our X-ray courses provide a comprehensive review of the fundamental principles in Chest and Emergency X-Ray interpretation and upper and lower limb interpretation. Recognise a normal X-Ray and common patterns of disease and radiographic patterns of trauma and injury commonly encountered for each body area. Modules are viewable for 6 times and will expire in 60 days.

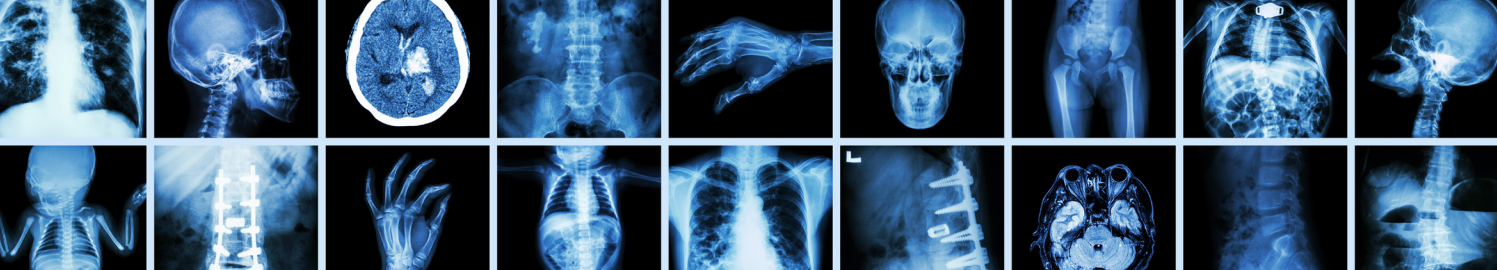
XRAY CHEST & EMERGENCY INTERPRETATION (ALL MODULES)		
CHEST	EMERGENCY	PHYSIO
Chest 1 Introduction, Techniques + Technical Adequacy	Emergency 1 Basic Principles + Terminology	Physio 1 Basic Principles + Terminology
Chest 2 Terminology	Emergency 2 Cervical Spine	Physio 2 Cervical Spine
Chest 3 Tubes + lines	Emergency 3 Thoracolumbar Spine	Physio 3 Thoracolumbar Spine
Chest 4 Cardiomediastinal Contours	Emergency 4 Pelvis	Physio 4 Pelvis
Chest 5 Hila + Pleura	Emergency 5 Lower Limb	Physio 5 Lower Limb
Chest 6 Airways + Lungs	Emergency 6 Upper Limb	Physio 6 Upper Limb
Chest 7 Bones + Soft Tissues	Emergency 7 Skull + Face	
Chest 8 Review Areas + Image Comparison	Emergency 8 Abdomen	

Surgical Imaging Interpretation Essentials Online

A comprehensive review of surgical imaging techniques and interpretation.

This course provides a review of surgical imaging techniques and interpretation. This includes the use of X-Ray, Ultrasound, CT & MRI. Each module is composed of an in-depth lecture followed by an interactive multiple choice quiz (MCQ) and case review session to reinforce fundamental learning objectives. This course will take approximately 12 hours to complete.

Module 1 Liver + Biliary Tree
Module 2 Speen + Pancreas
Module 3 Adrenals, Kidneys + Bladder
Module 4 GIT
Module 5 Retroperitoneum, Vessels, Peritoneum, Abdominal wall + Nodes



Ultrasound | Critical Care and Ultrasound Medical + Surgical Online

The courses contain the same lectures as the face to face course, but without the workshop component. Quizzes are used to ensure participants comprehend fundamental learning objectives. These online courses take approximately 8 hours to complete.

Modules are viewable 6 times and will expire in 90 days.

ULTRASOUND CRITICAL CARE
Module 1 Introduction to Ultrasound
Module 2 Chest
Module 3 Basic Echocardiography
Module 4 FAST Techniques
Module 5 Vascular Abdomen
Module 6 Liver + Biliary Tree
Module 7 Spleen + Pancreas
Module 8 Renal Tract
Module 9 Female Pelvis + 1st Trimester
Module 10 Upper + Lower Limbs
Module 11 Interventional Techniques - Central Line Insertion

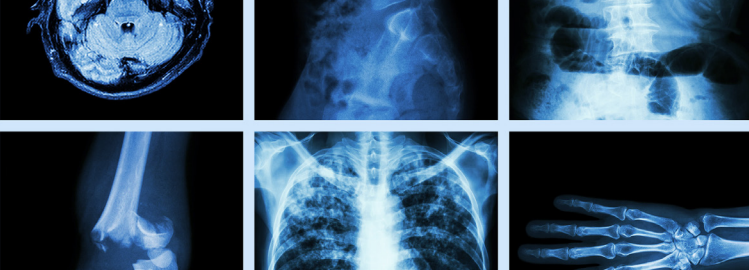
ULTRASOUND MEDICAL + SURGICAL
Module 1 Introduction to Ultrasound
Module 2 Chest
Module 3 Neck
Module 4 Liver & Biliary Tree
Module 5 Spleen + Pancreas
Module 6 Renal Tract
Module 7 Female Pelvis + 1st Trimester

Ultrasound | Guided Regional Anaesthesia Online

This online course teaches the fundamentals of ultrasound guided regional anaesthesia.

Online lectures with interactive quizzes to reinforce fundamental learning objectives. The curriculum includes ultrasound guided regional anaesthesia of the neck, upper limb, lower limb and trunk, as well as principles of ultrasound guided interventional techniques.

PRE COURSE MODULE Introduction to Ultrasound	Module 3 Common blocks of the brachial plexus and upper limb
PRE COURSE TEST	Module 4 Common blocks of the trunk
Module 1 Principles of ultrasound guided regional anaesthesia	Module 5 Common blocks of the lower limb
Module 2 Common blocks of the head and neck	POST COURSE TEST



CT | Acute Medical + Surgical Interpretation Essentials Online

The perfect introduction to computed tomography in the acute clinical setting.

Designed in a systematic learning format, the course covers acquisition, normal variations, patterns of disease & pitfalls in CT imaging of the head, chest, abdomen, pelvis, cervical and thoracolumbar spine.

Modules are viewable for 6 times and will expire in 60 days.

Module 1 Introduction to CT
Module 2 CT Brain + Skull
Module 3 CT Abdo/ Pelvis Part 1
Module 4 CT Abdo/ Pelvis Part 2
Module 5 CT Spine + Pelvis

Each module includes interactive cases and questions to reinforce fundamental learning principles.



LIGHTBOX
RADIOLOGY EDUCATION

WE'RE SOCIAL



GET IN TOUCH

WWW.LIGHTBOXRADIOLOGY.COM

P + 617 5449 2717