

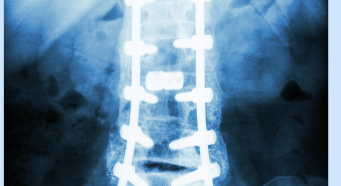


LIGHTBOX  
RADIOLOGY EDUCATION

# ONLINE QUICK COURSE GUIDE

WWW.LIGHTBOXRADIOLOGY.COM





## NEW COURSE

# Neuroradiology Brain + Spine Interpretation

A comprehensive overview of imaging of the brain and spine.

Designed in a systematic learning format, the course covers imaging basics, normal anatomy, pathology and approach to interpretation of patterns of disease in the cerebrum, cerebellum, brainstem, skull, dura and spine.

Each module is composed of a lecture followed by a case review set to reinforce fundamental principles of imaging interpretation. A guided review is provided for each case set.

Introduction to MRI
Introduction to CT
CT Anatomy QUIZ - Cervical Spine
MRI Anatomy QUIZ - Brain
BRAIN - Haemorrhage, herniation & Imaging basics. Review of CT & MRI neuroimaging acquisition & sequences. Case Set 1 & Guided Review
BRAIN - Mass lesions, pituitary, cerebellopontine angle Case Set 2 & Guided Review
BRAIN - Congenital anomalies, infection, infarction, demyelination, metabolic and toxic disease, degenerative disease Case Set 3 & Guided Review
SPINE (Part 1) - CT Technique and MRI sequence, trauma, haemorrhage, disc pathology Case Set 4 & Guided Review
SPINE (Part 2) - Neoplasms, congenital anomalies, cord infarction, demyelination, metabolic and toxic disease Case Set 5 & Guided Review
Competency Assessment - Image Interpretation



## NEW COURSE

# Paediatric Imaging Interpretation

An introduction to imaging interpretation of commonly encountered paediatric disease.

The course covers imaging of the head, chest, abdomen and musculoskeletal system in 5 modules.

Each module is composed of a didactic lecture followed by a case review set where delegates review cases with X-ray, Ultrasound, CT and MRI to consolidate fundamental principles of imaging interpretation. A guided review is provided for each case set.

Introduction to MRI

Introduction to CT

Introduction to Ultrasound

Introduction to X-Ray

Imaging of the Brain and Skull - CT & MRI  
Quiz, Case Set 1 & Guided Review

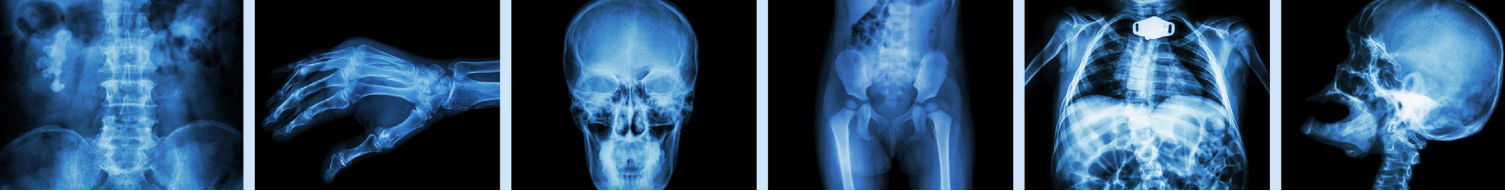
Imaging of the Chest - X-Ray & CT  
Quiz, Case Set 2 & Guided Review

Imaging of the Genitourinary System  
Quiz, Case Set 3 & Guided Review

Imaging of the Gastrointestinal Tract  
Quiz, Case Set 4 & Guided Review

Imaging of the Musculoskeletal System  
Quiz, Case Set 5 & Guided Review

Competency Assessment - Image Interpretation



## Ultrasound | Critical Care and Ultrasound Medical + Surgical

This online course is designed for those working in the critical care setting to have a fundamental understanding of the techniques and interpretation of ultrasound at the bedside with a focus on RUSH techniques including HI MAP, and ultrasound guided intervention.

This online course is designed to give participants an overview of the techniques and interpretation of diagnostic ultrasound in internal medicine and surgery.

ULTRASOUND   CRITICAL CARE
Module 1   Introduction to Ultrasound
Module 2   Basic Principles and Terminology
Module 3   Chest - Pneumothorax, pleural effusion, pleurocentesis
Module 4   Basic Echocardiography
Module 5   FAST Techniques
Module 6   Vascular Abdomen
Module 7   Liver + Biliary Tree
Module 8   Spleen + Pancreas
Module 9   Renal Tract
Module 10   Female Pelvis + 1st Trimester
Module 11   Upper + Lower Limbs
Module 12   Interventional Techniques - Central Line Insertion

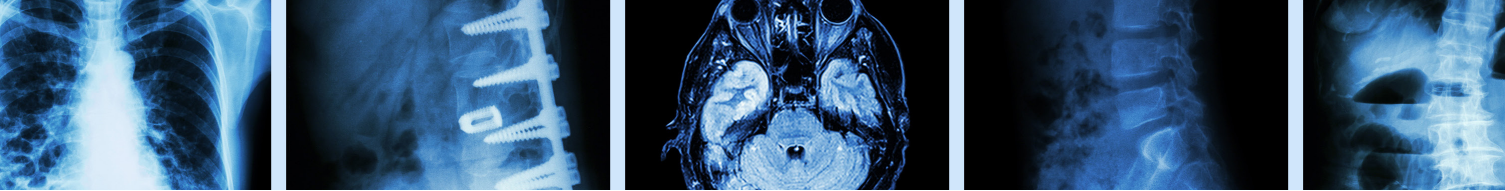
ULTRASOUND   MEDICAL + SURGICAL
Module 1   Introduction to Ultrasound
Module 2   Chest
Module 3   Neck
Module 4   Liver & Biliary Tree
Module 5   Spleen + Pancreas
Module 6   Renal Tract
Module 7   Female Pelvis + 1st Trimester

## MRI Interpretation Essentials

A overview of MR imaging of the spine, shoulder, elbow, wrist, hip, knee and ankle.

Designed in a systematic learning format, the course covers imaging basics, normal anatomy, pathology and approach to interpretation of patterns of disease in the spine, shoulder, elbow, wrist, hip, knee and ankle. Each module is composed of a webinar style lecture followed by an interactive case review session to reinforce fundamental principles of imaging interpretation.

Introduction to MRI	MRI Anatomy - Knee (Axial)
MRI Anatomy - Shoulder (Axial)	MRI Anatomy - Ankle (Axial)
MRI Anatomy - Elbow (Axial)	WEBINAR 1 - MRI Spine Case Set 1 & Guided Case Review
MRI Anatomy - Wrist (Axial)	WEBINAR 2 - MRI Upper Limb Case Set 2 & Guided Case Review
MRI Anatomy - Hip (Axial)	WEBINAR 3 - MRI Lower Limb Case Set 3 & Guided Case Review



# X-RAY | Chest + Emergency Interpretation Essentials, Chest Interpretation Essentials, Emergency Interpretation Essentials, Acute Interpretation in Physiotherapy Essentials

Despite the technological advancements in medical imaging, the Chest X-Ray remains the most frequently requested radiological investigation, and one of the most difficult to interpret correctly.

Our X-ray courses provide a comprehensive review of the fundamental principles in Chest and Emergency X-Ray interpretation and upper and lower limb interpretation. Recognise a normal X-Ray and common patterns of disease and radiographic patterns of trauma and injury commonly encountered for each body area. Each module is composed of an in-depth lecture which includes interactive multiple choice quizzes (MCQ) and case reviews.

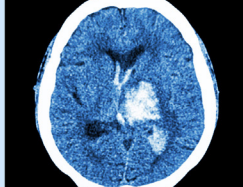
XRAY   CHEST & EMERGENCY INTERPRETATION (ALL MODULES)		
CHEST	EMERGENCY	PHYSIO
Chest 1   Introduction, Techniques + Technical Adequacy	Emergency 1   Basic Principles + Terminology	Physio 1   Basic Principles + Terminology
Chest 2   Terminology	Emergency 2   Cervical Spine	Physio 2   Cervical Spine
Chest 3   Tubes + lines	Emergency 3   Thoracolumbar Spine	Physio 3   Thoracolumbar Spine
Chest 4   Cardiomedastinal Contours	Emergency 4   Pelvis	Physio 4   Pelvis
Chest 5   Hila + Pleura	Emergency 5   Lower Limb	Physio 5   Lower Limb
Chest 6   Airways + Lungs	Emergency 6   Upper Limb	Physio 6   Upper Limb
Chest 7   Bones + Soft Tissues	Emergency 7   Skull + Face	
Chest 8   Review Areas + Image Comparison	Emergency 8   Abdomen	

## Surgical Imaging Interpretation Essentials

A comprehensive review of surgical imaging techniques and interpretation.

This course provides a review of surgical imaging techniques and interpretation. This includes the use of X-Ray, Ultrasound, CT & MRI. Each module is composed of an in-depth lecture followed by an interactive multiple choice quiz (MCQ) and case review session.

Introduction to CT	1. Liver + Biliary Tree
Introduction to MRI	2. Speen + Pancreas
Introduction to X-Ray	3. Adrenals, Kidneys + Bladder
CT Anatomy - Abdomen (Axial)	4. Gastrointestinal Tract
	5. Retroperitoneum, Vessels, Peritoneum, Abdominal wall + Nodes



## CT | Acute Medical + Surgical Interpretation Essentials

The perfect introduction to computed tomography in the acute clinical setting.

Designed in a systematic learning format, the course covers acquisition, normal variations, patterns of disease & pitfalls in CT imaging of the head, chest, abdomen, pelvis, cervical and thoracolumbar spine.

Each module includes interactive cases and questions to reinforce fundamental learning principles.

### Pre Course Quiz

1.1 CT Anatomy - Brain (Axial)

1.2 CT Brain + Skull

1.3 Case Set

2.1 CT Anatomy - Chest (Axial)

2.2 CT Chest

2.3 Case Set

3.1 CT Anatomy - Abdomen + Pelvis (Axial)

3.2 CT Abdo/ Pelvis Part 1

3.3 Case Set

4.1 CT Abdo/ Pelvis Part 2

4.2 CT Case Set

5.1 CT Anatomy - Cervical Spine (Axial)

5.2 CT Spine + Pelvis

5.3 Case Set



**LIGHTBOX**  
RADIOLOGY EDUCATION

WE'RE SOCIAL



GET IN TOUCH

[WWW.LIGHTBOXRADIOLOGY.COM](http://WWW.LIGHTBOXRADIOLOGY.COM)

P + 617 5449 2717